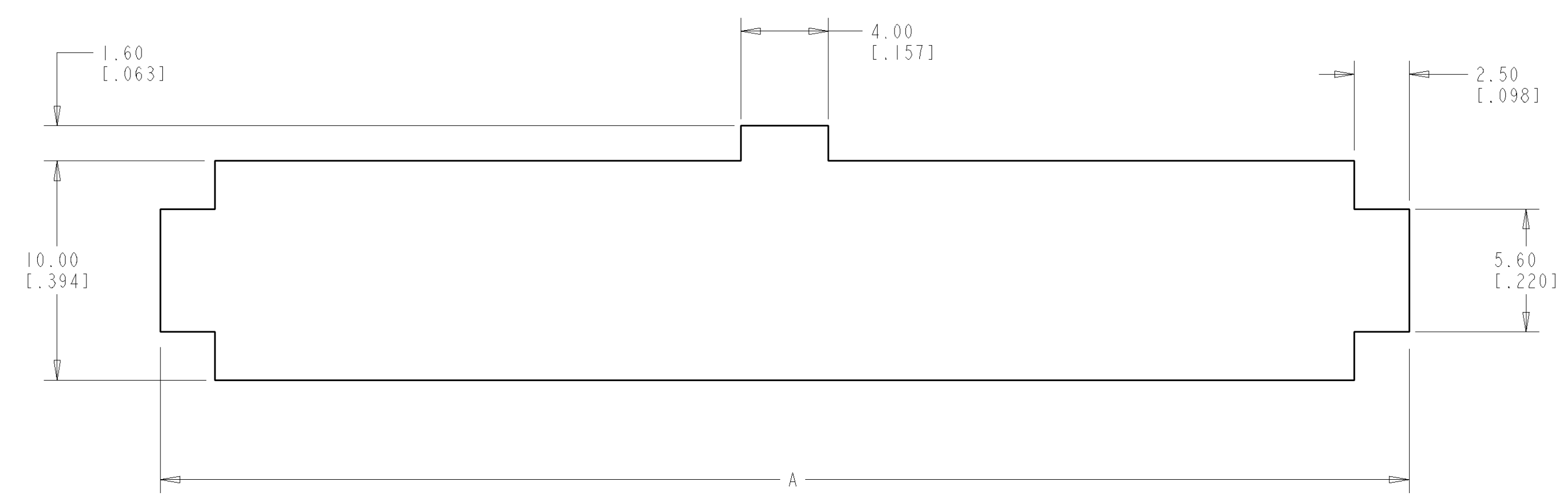
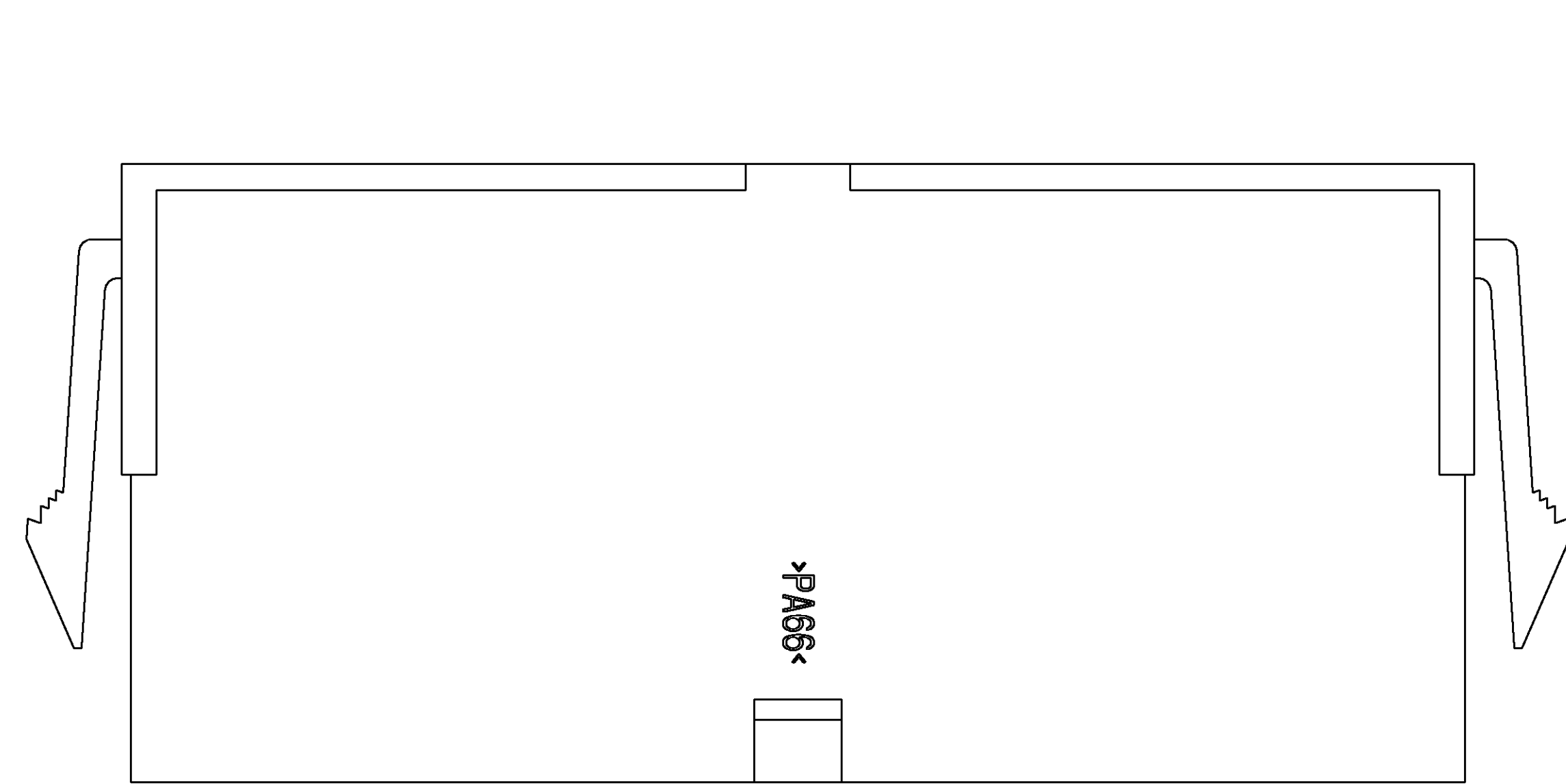
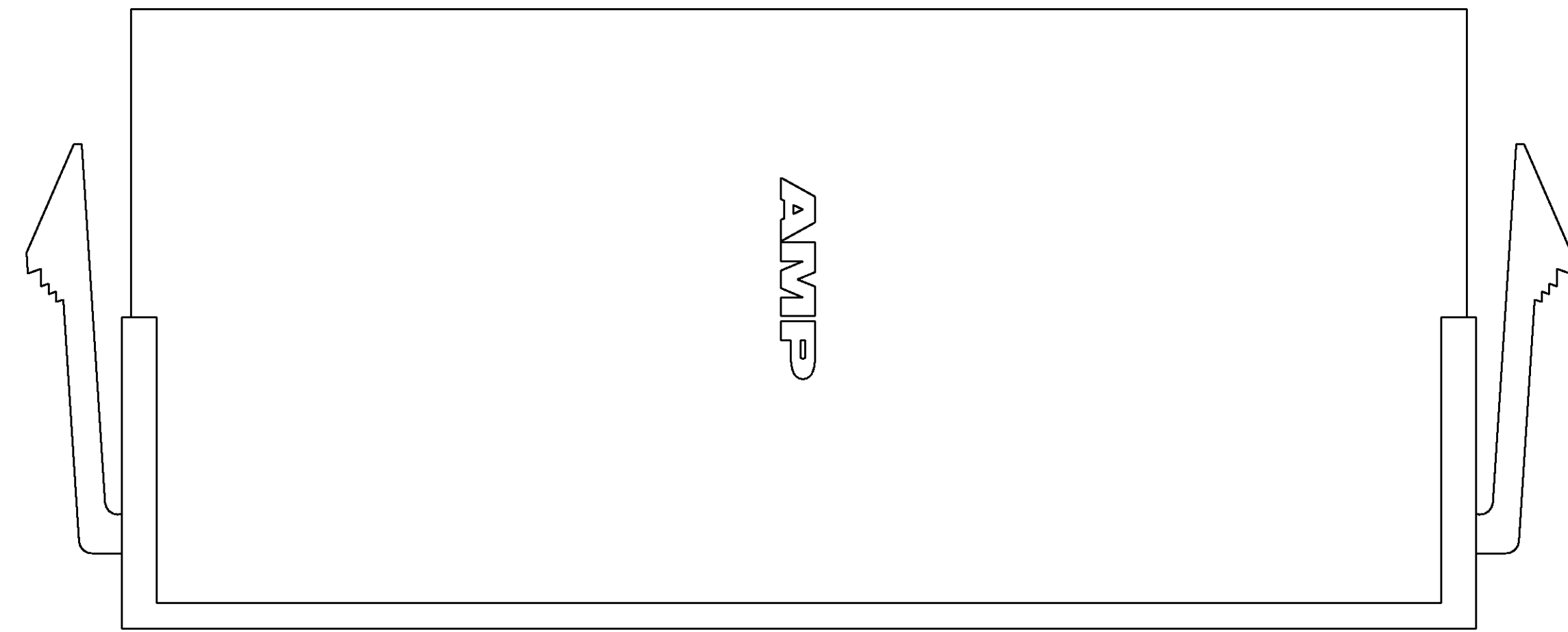
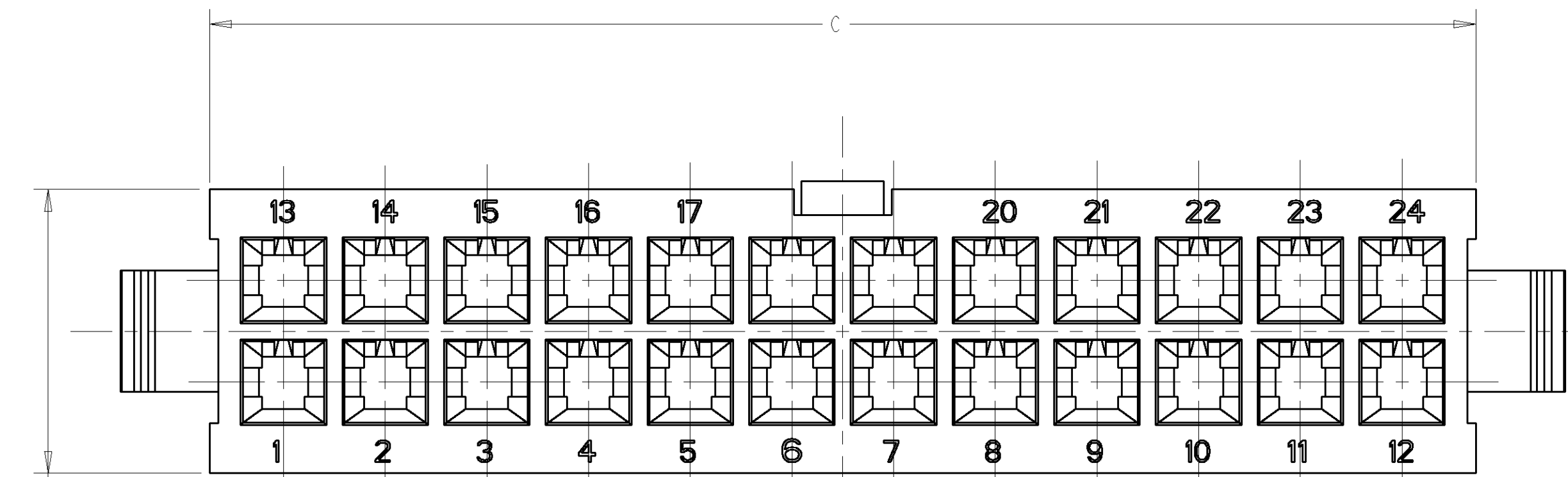
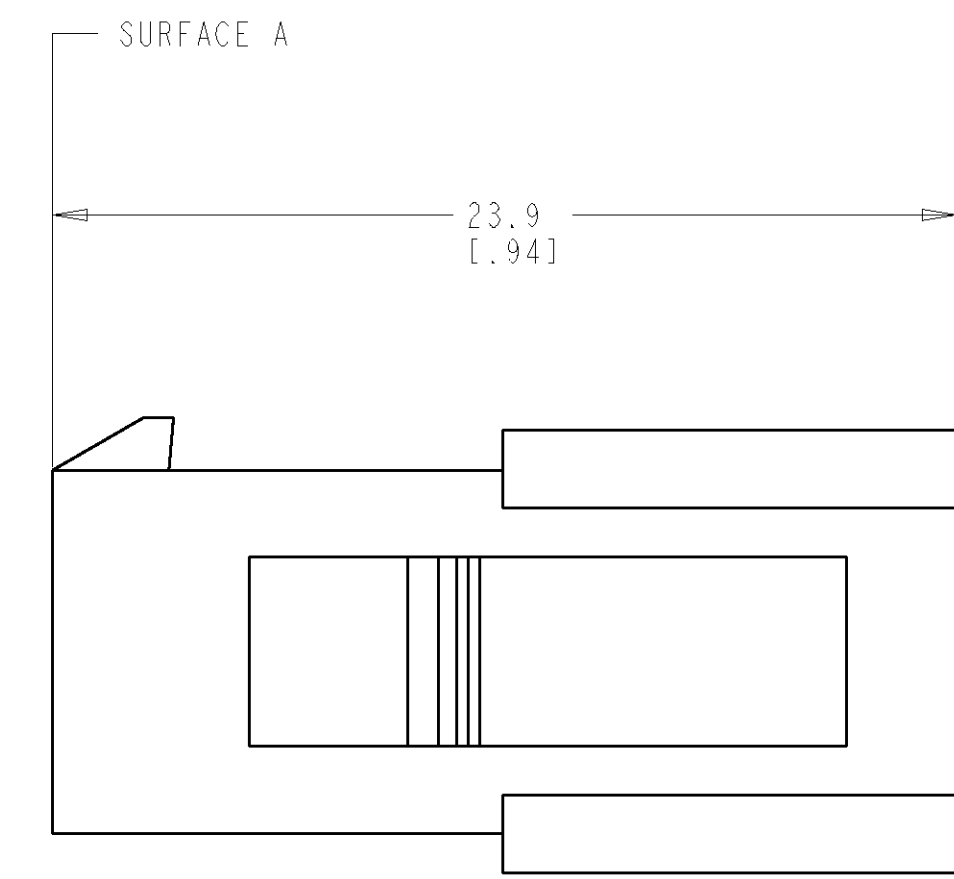
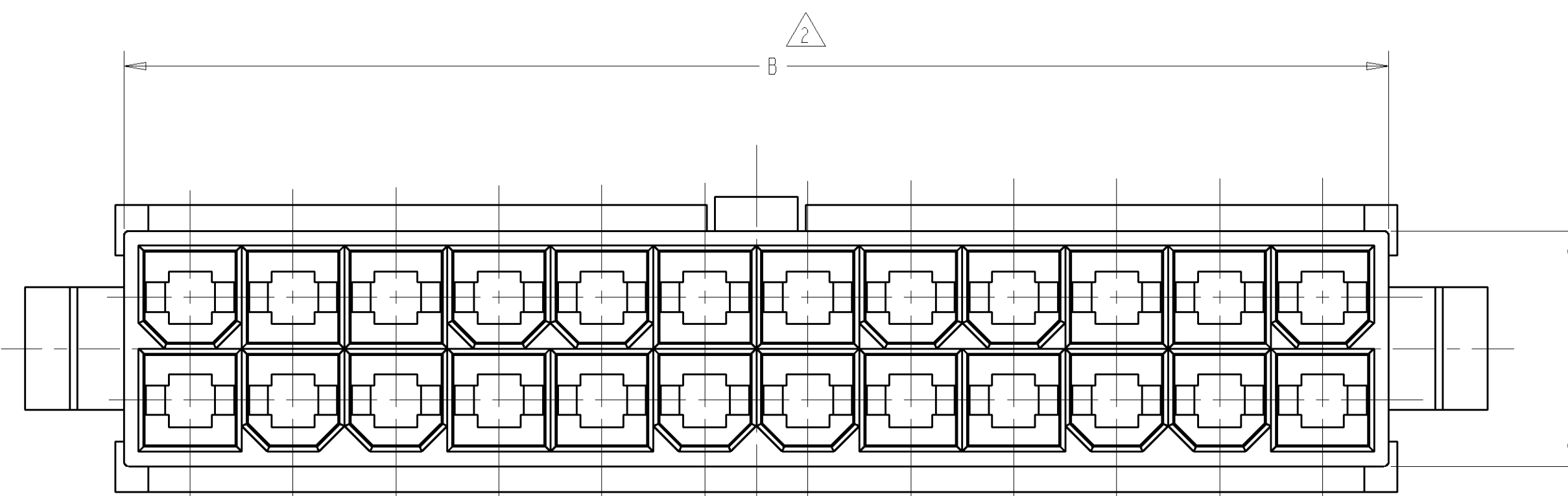


LOC	DIST	REVISIONS			
		REV	DATE	BY	APP'D
CM	53	0	RLSD PER PR CM 99-27	26MAR1999	RV RS



RECOMMENDED CUT OUT
 FOR 2.00[.079] MAX. THICK PANEL



- 1 NYLON, UL94V-2, NATURAL.
- 2 DIMENSION TO BE CHECKED AT SURFACE A.
- 3 DIMENSIONS IN BRACKETS ARE IN INCHES.
- 4 MALE CONTACTS MUST BE INSERTED SO THAT THE TOP OF THE WIRE AND INSULATION CRIMPS ARE FACING THE SIDE OF THE HOUSING WITH THE LOCKING LATCH.
- 5 RECOMMENDED MAX. PANEL THICKNESS 2.00[.079].
- 6 PANEL MUST BE PUNCHED SO THAT THE HOUSING ENTERS THE PANEL IN THE SAME DIRECTION AS THE PUNCH.

C	B	A	NO. OF POSITIONS	PART NUMBER
52.3[2.059]	51.6[2.032]	57.00[2.244]	24	2-794550-4
48.1[1.894]	47.4[1.866]	52.80[2.079]	22	2-794550-2
43.9[1.728]	43.2[1.701]	48.60[1.913]	20	2-794550-0
39.7[1.563]	39[1.535]	44.40[1.748]	18	1-794550-8
35.5[1.398]	34.8[1.370]	40.20[1.583]	16	1-794550-6
31.3[1.232]	30.6[1.205]	36.00[1.417]	14	1-794550-4
27.1[1.067]	26.4[1.039]	31.80[1.252]	12	1-794550-2
22.9[.902]	22.2[.874]	27.60[1.087]	10	1-794550-0
18.7[.736]	18[.709]	23.40[.921]	8	794550-8
14.5[.571]	13.8[.543]	19.20[.756]	6	794550-6
10.3[.406]	9.6[.378]	15.00[.591]	4	794550-4
6.1[.240]	5.4[.213]	10.80[.425]	2	794550-2

DIMENSIONS: mm [INCHES] TOLERANCES UNLESS OTHERWISE SPECIFIED: 0 PLC ± .01 1 PLC ± .02 2 PLC ± .03 3 PLC ± .04 4 PLC ± .05 ANGLES ± .01		DWN R. VESTAL T6MAR99 CHK R. SWING T6MAR99 APD C. CASH T6MAR99	AMP Incorporated Harrisburg, PA 17105-3608
MATERIAL: NYLON FINISH:		PRODUCT SPEC: APPLICATION SPEC: WEIGHT: CUSTOMER DRAWING	AMP PLUG, PANEL MOUNT, 2 TO 24 POSITION, AMP-DUAC™ POWER CONNECTOR SIZE: A1 CAGE CODE: 00779 DRAWING NO: 794550 RESTRICTED TO:

